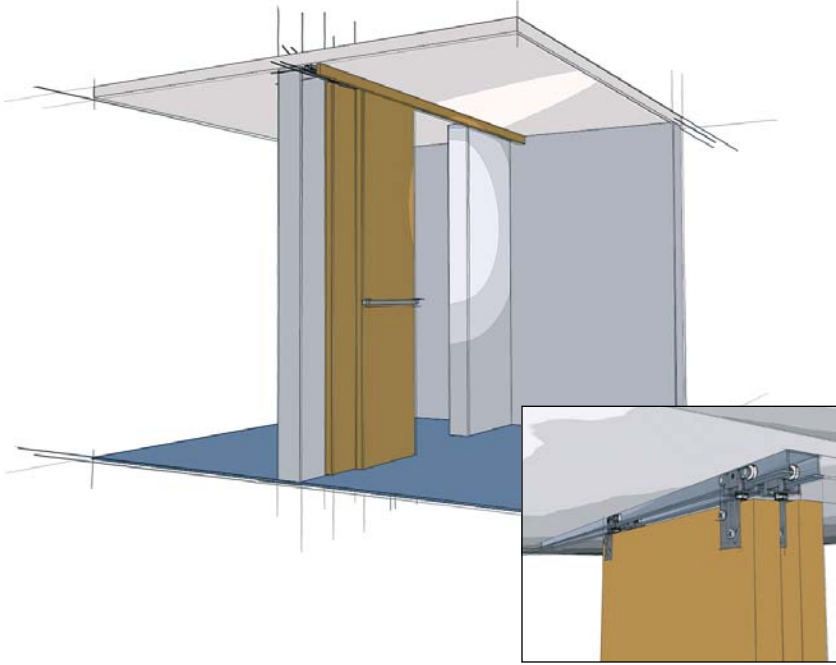


# By-passing Door Sets Top Line Grant 72-134

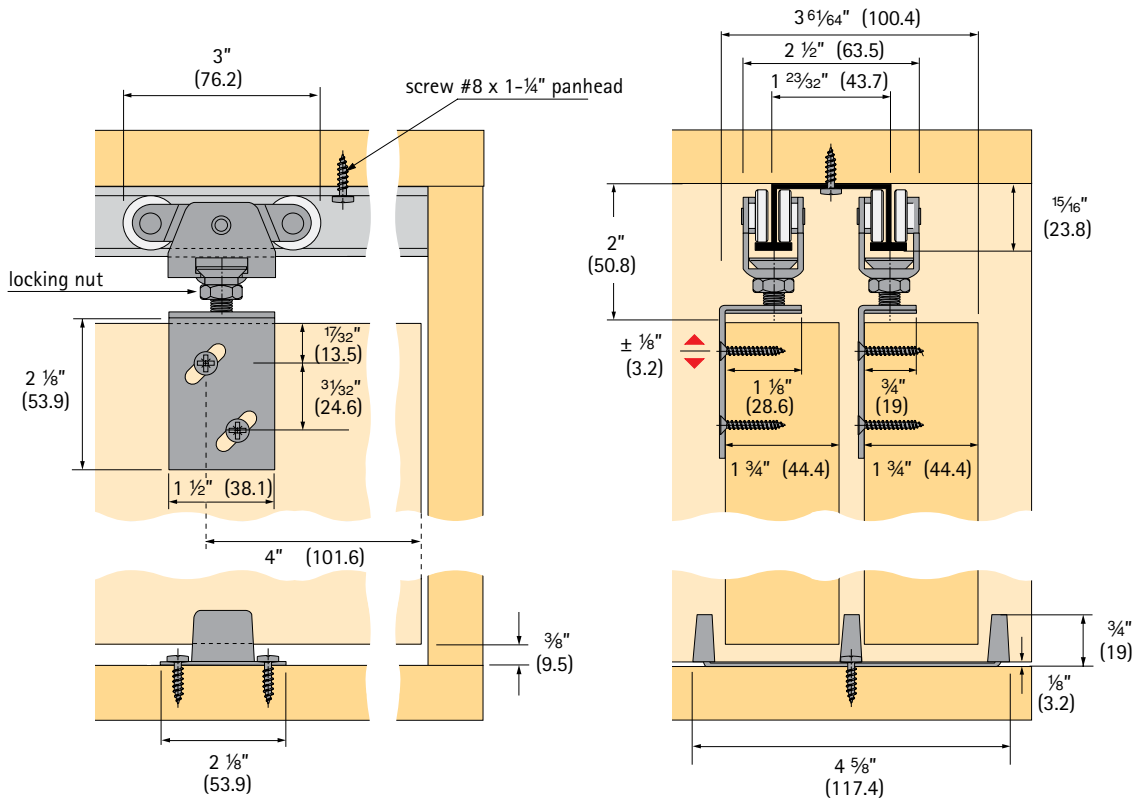
up to 150 lbs/door (68 kg/door), double track  
for door thickness 1 3/4" (44.4 mm), side mount, adjustable



## Top Line Grant 72-134

A medium duty commercial and residential grade sliding door hardware series ideal for by-passing installations. Applications include doors between rooms, closet doors, cabinets, storage walls, and partitions.

- For 1 3/4" doors weighing up to 150 lbs (68 kg), optional nylon wheel carrier up to 100 lbs (45 kg)
- High quality precision ball-bearing wheels for quiet and effortless performance
- Heavy duty aluminum Double I-beam track; jump proof design
- Pivoting rocker arms ensure track-carrier contact.
- Ball and socket suspension compensates for minor header misalignment.
- Lock nut guarantees permanent positioning.
- Serrations in apron permit vertical adjustment.
- Conforms to ANSI/BHMA standards, Grade 1
- Made in USA



Technical specifications are subject to change without notice

**Specifications:**

Mounting: Side  
 Adjustment: 1/4" (6.4 mm) vertical  
 Door thickness: 1 3/4" (44.4 mm)  
 Headroom: 1 7/8" (47.6 mm) min., 2 1/8" (53.9 mm) max  
 Application: By-passing

**Top Line Grant 72 – 134 door hardware is available in four purchasing options**

**Option I**

Complete package, includes track, hardware set, and all screws

**Hardware and track**

Length	Order no.	PU
4' (1200 mm)	113 335 9	5 sets
5' (1500 mm)	113 336 0	5 sets
6' (1800 mm)	113 336 1	5 sets
8' (2400 mm)	113 336 2	5 sets

For longer track application order hardware set and track separately

**Option II**

Track only

**Double track 7003**

Aluminum extruded, pre-drilled holes



Length	Order no.	PU
4' (1200 mm)	050 533	5
5' (1500 mm)	050 534	5
6' (1800 mm)	050 535	5
8' (2400 mm)	050 536	5
10' (3000 mm)	050 537	5
12' (3600 mm)	050 538	5
16' (4800 mm)	050 539	5

Screws not included - recommend #8 Pan Head  
 Tracks 8' and under are notched at one end for easy access

**Option III**

Hardware set only

**Top Line Grant 72 – 134 hardware set (without track)**

The hardware set includes:  
 4 carriers 7000 precision ball bearing wheels  
 2 aprons 7034 (front door)  
 2 aprons 7138 (rear door)  
 1 floor guide 118  
 1 wrench  
 necessary screws and installation instructions

Article	Order no.	PU
Hardware set	113 335 8	10 sets

**Option IV**

Separate components

**Top Line Grant 72-134 components**

**Carrier 7000 ball bearing**

Steel, precision ball bearing wheels, up to 150 lbs/door (68 kg/door)



Finish	Order no.	PU
zinc-plated	113 333 9	100

**Apron 7034/7138**

Cold rolled steel, adjustable

Screws included



Article	Finish	Order no.	PU
1 apron 7034, 3/4" offset	zinc-plated	050 563	100
2 apron 7138, 1 1/8" offset	zinc-plated	050 565	100

**Floor guide 118**

Steel/Nylon

Screws included



Finish	Order no.	PU
zinc-plated	050 105	50

**Optional parts (not included in set)**

**Carrier 7000 nylon**

Steel, wheel nylon, up to 100 lbs/door (45 kg/door)



Finish	Order no.	PU
zinc-plated	113 333 8	100

**Bumper stop 7014**

Steel, track mounted, rubber stop, 2 required per track



Finish	Order no.	PU
zinc-plated	050 561	20