

# Silent System

The perfect cushioning system controls furniture door closure gently and quietly.



**Convenience for the customer – Solutions for every application:**

## Clip-on door buffer

- Simply clips on
- No additional steps in manufacture
- A simple screw enables step-less adjustment of the cushioning function
- Toolless assembly and disassembly
- Door buffer identical for left and right-hand mounted doors
- Can be retrofitted to tried and tested Intermat and Ecomat hinges



## Screw-on door buffer for overlay and inset doors

- Fastens to upper or lower cabinet panel
- No additional steps in manufacture
- A simple screw enables step-less adjustment of the cushioning function
- Can be retrofitted to tried and tested Intermat and Ecomat hinges



## Drill-in door buffer for overlay doors

- Fits almost invisibly into the lower or upper panel: discreet, yet efficient
- Can also be retrofitted to existing cabinets
- To fit, simply insert into a 10 mm dia. hole
- For use with Intermat or Ecomat hinges

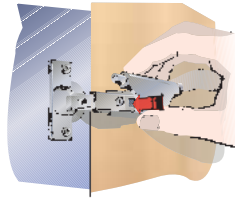


# Silent System for Intermat and Ecomat hinges

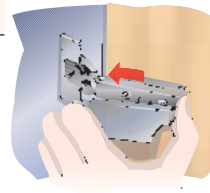
## Technical information



Assembly



Disassembly

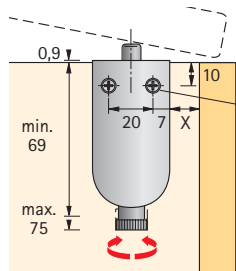
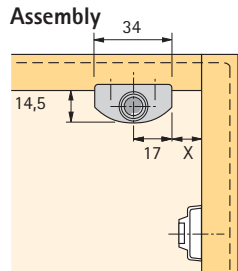
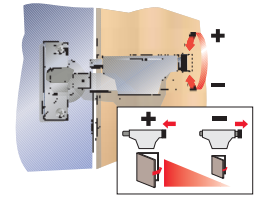


### Clip-on door buffer Silent System

for overlay doors (cranking 0 and 9,5 mm), inset doors (cranking 16 mm) and for use with Intermat and Ecomat hinges.

A simple screw enables step-less adjustment of the cushioning function.

Grey plastic

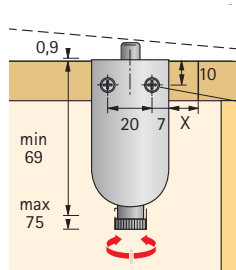
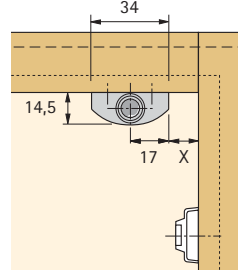
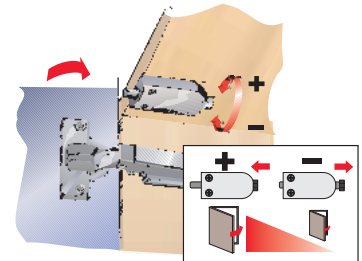


### Screw-on door buffer Silent System

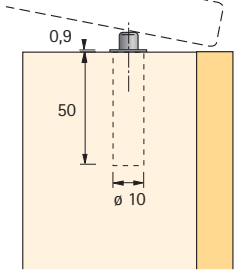
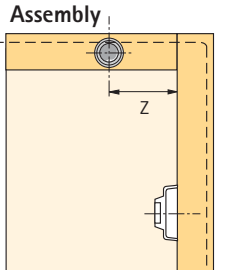
for **overlay** and **inset** doors and for use with Intermat and Ecomat hinges.

A simple screw enables step-less adjustment of the cushioning function.

Grey plastic



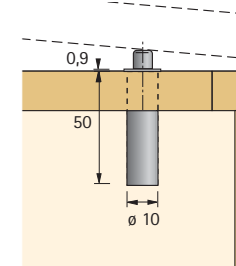
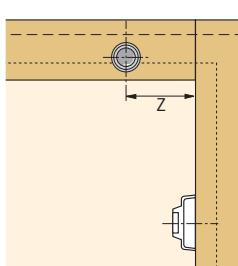
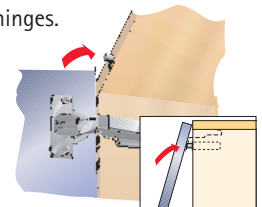
Dimension X = distance from mounting plate + hinge cranking



### Drill-in door buffer Silent System

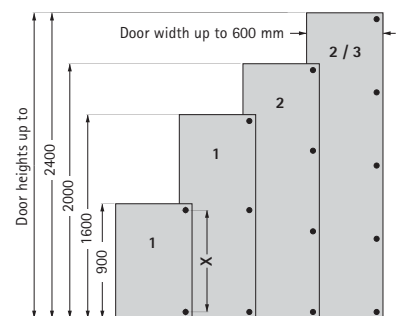
for **overlay** doors and for use with Intermat and Ecomat hinges.

Grey plastic



Dimension Z = 17 + distance from mounting plate + hinge cranking

### Recommended number of buffers per door



Guide values for 19 mm chipboard panels with a density of 750 kg/m<sup>3</sup>