

Mounting Instructions and Recommendations

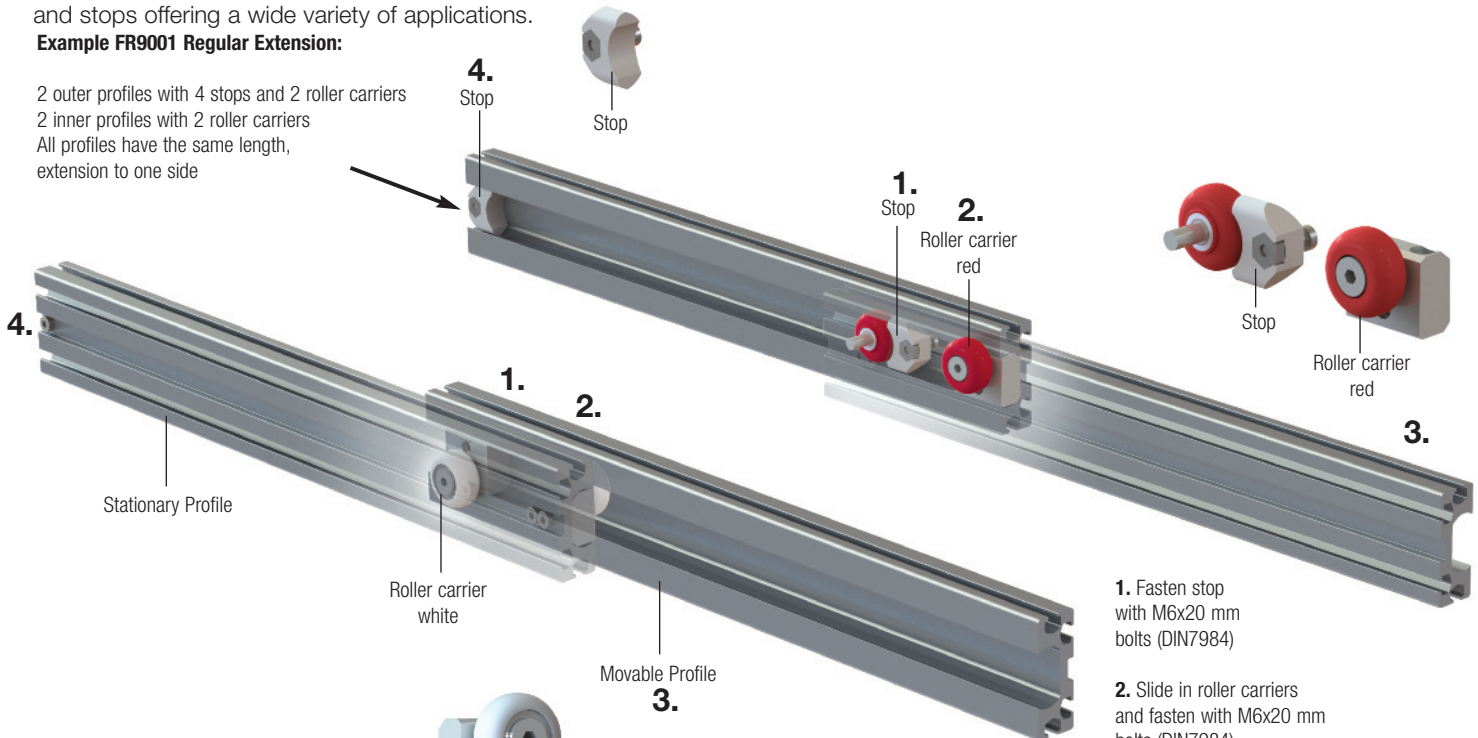
FR 9001 Aluminum Sliding System

3 Components = 1 System

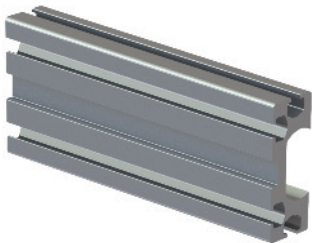
A commonly shared extruded profile with a special interior shape in combination with roller carriers and stops offering a wide variety of applications.

Example FR9001 Regular Extension:

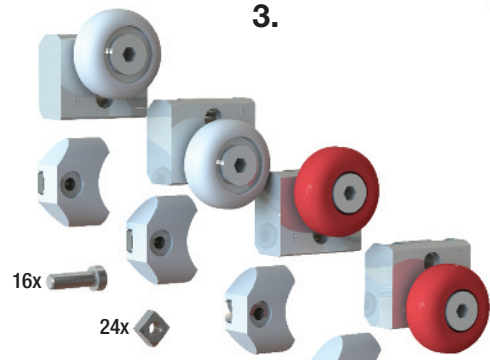
2 outer profiles with 4 stops and 2 roller carriers
 2 inner profiles with 2 roller carriers
 All profiles have the same length,
 extension to one side



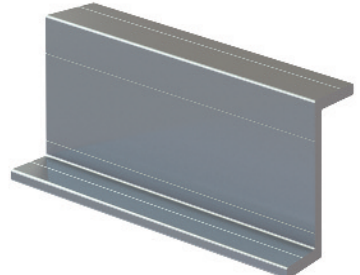
1. Fasten stop with M6x20 mm bolts (DIN7984)
2. Slide in roller carriers and fasten with M6x20 mm bolts (DIN7984)
3. Slide in movable profile from the back forward
4. Fasten stop with M6x20 mm bolts (DIN7984)



Profile A: Required Extrusion



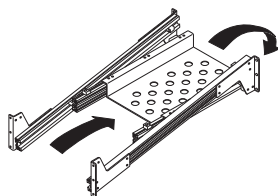
- Roller Kit: Required**
 2 pcs. ballbearing rollers, (white)
 2 pcs. solid rollers (tolerance compensating), (red)
 4 pcs. stops
 16 pcs. M6x20mm bolts (DIN7984)
 24 pcs. M6 square nuts (DIN557)



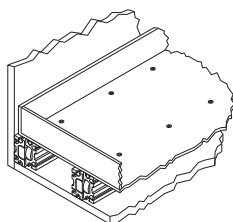
Profile B Extrusion: Optional (Mounting or drawer construction components)

FR 9001 Aluminum Sliding System Application Examples

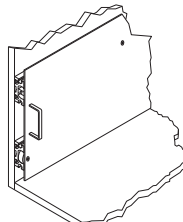
(US-Patent No. 6,039,421)



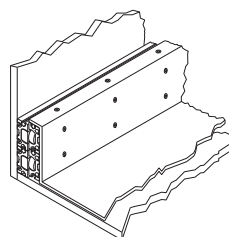
Tilt-down application with custom made brackets



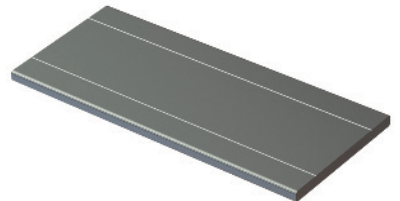
Horizontal application underneath tray



Vertical application

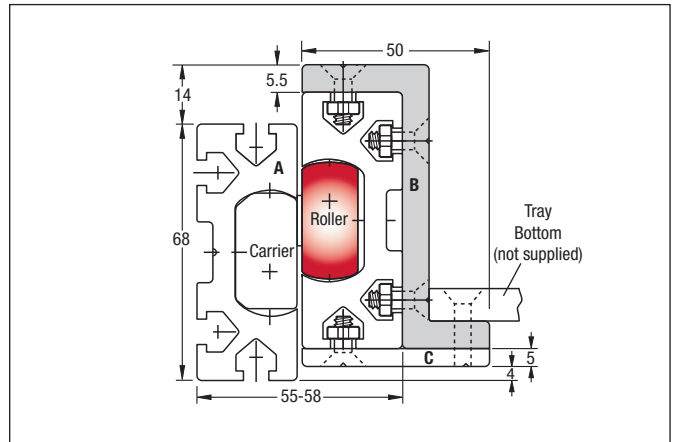
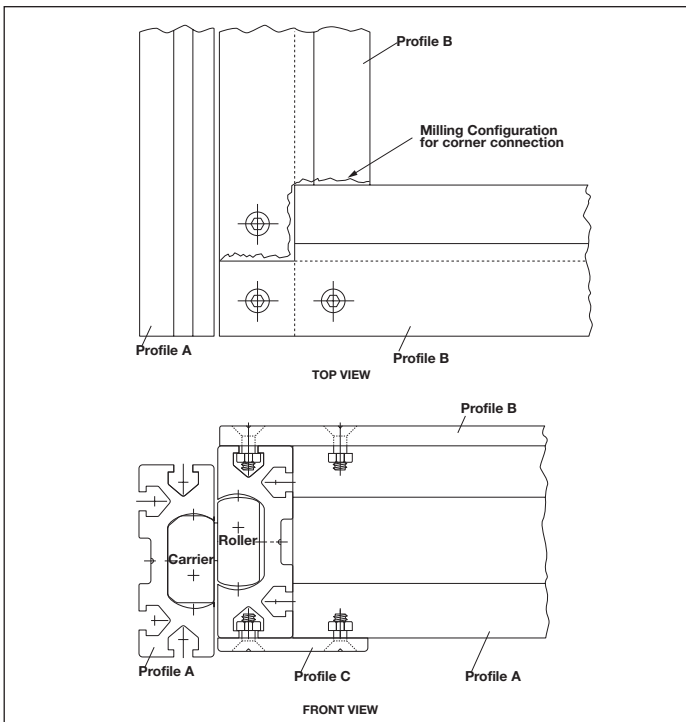
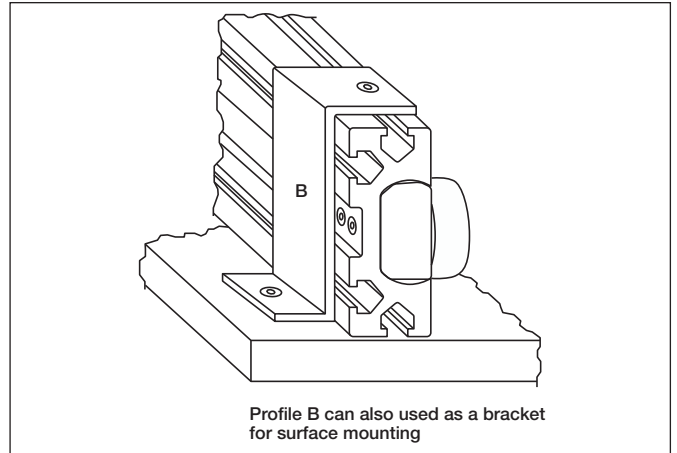
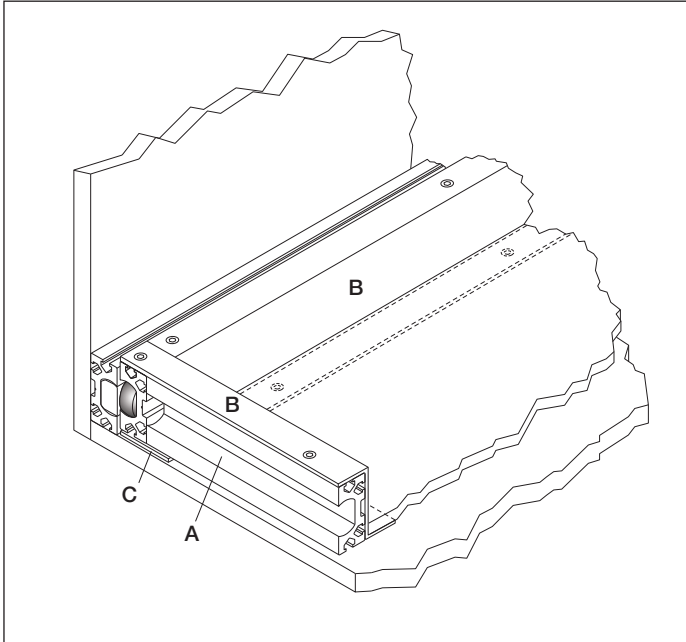


Double stacked application on the side of tray



Profile C Extrusion: Optional (Mounting or drawer construction components)

FR 9001 Aluminum Sliding System



To order please specify item number

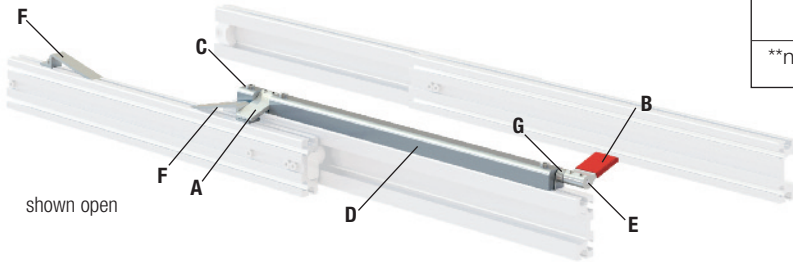
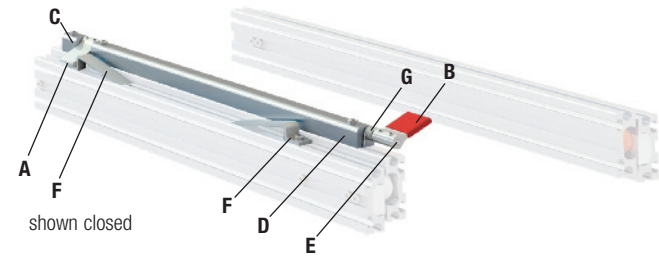
Item Number	Description	(Sold by foot)
92014	Profile A Extrusion, 6400mm	(21ft.)
92015	Profile B Extrusion, 6400mm	(21ft.)
92016	Profile C Extrusion, 6400mm	(21ft.)
9200	Roller Set, consisting of: 2 pcs. solid rollers (tolerance compensating), (red) 2 pcs. ballbearing rollers, (white) 4 pcs. stops 16 pcs. M6x20mm bolts (DIN7984) 24 pcs. M6 square nuts (DIN557)	

Features:

- ▶ Modular Sliding System comprised of 3 Aluminum components for a wide variety of applications
- ▶ 200kg (450lbs.) weight capacity for a 4ft. long pull-out Regular Extension is approximately 70% of the length of the profile
- ▶ The special interior shape of the profile compensates for installation inaccuracies in width, height and angular direction
- ▶ The extruded profile is available up to 6400mm (21ft.)
- ▶ Simple and secure fastening of the profiles by means of the T-slots and M6 bolts
- ▶ Simple and secure fastening of the roller carriers and stops with M6 bolts

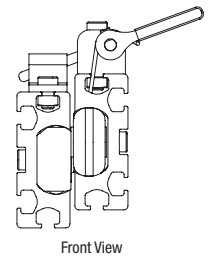
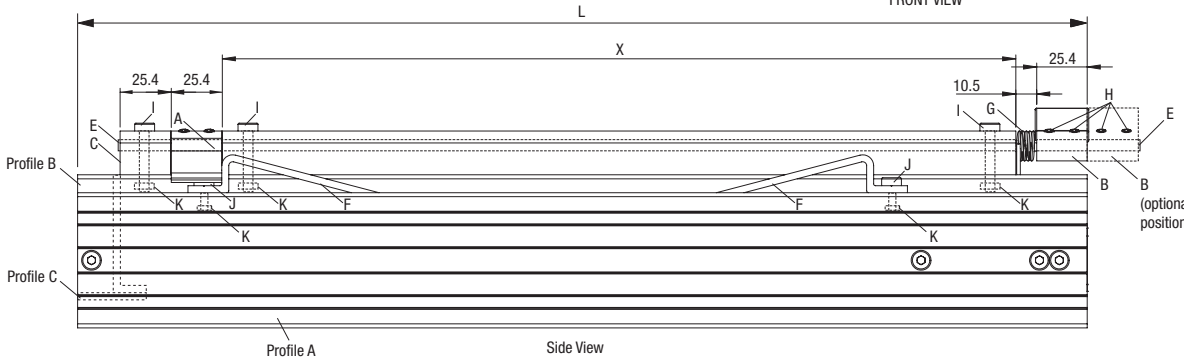
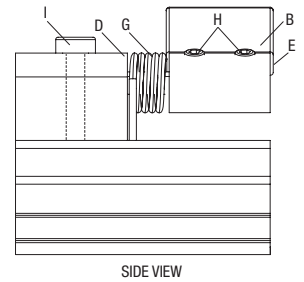
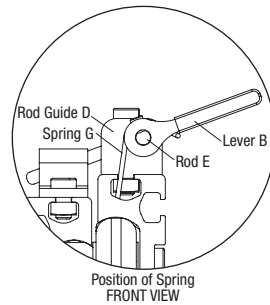
- ▶ A recess for a M6 (DIN7984) Allen head bolt with a centerline groove to accurately mark the position of the holes
- ▶ Only one version of stops
- ▶ Roller carrier equipped with two types of rollers:
 - Solid high-impact plastic roller with lateral play to overcome dimensional installation inaccuracies
 - Ballbearing roller with high-impact plastic running surface
- ▶ The system FR 9001 allows the fabricator to create any size pull-out from individual components

FR 9001 Aluminum Sliding System Lock and Stop Set



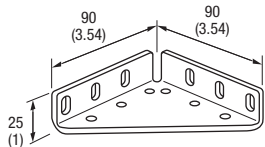
To order please specify item number

Item Number	Description
92018**	Profile D Extrusion, 6400mm (21 feet) sold by foot
92018C	Profile D Extrusion, 25.4mm (1 inch)
92021	Rod E, steel, 6mm dia. x 2000mm (78 in.) long sold by piece
9202	Lock and Stop Set, consisting of: 1 pc. Lock lever (A) 1 pc. Release lever (B) 1 pc. Rod guide (C) 2 pcs. Ramp (F), 1 pc. Spring (G) 4 pcs. Set screws M5 x 6mm (H) 3 pcs. Bolt M6 x 30mm (I) 2 pcs. Bolt M6 x 12mm (J) 5 pcs. Square nut M6 (K)
**non-stocking item, request lead time	



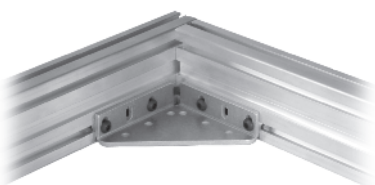
Inches		18	20	22	24	26	28	30	32	34	36	38	40	44	48	52	56	60	64	68	72	76	80	84	88	92	96	100
Length		12.6	14	15.4	16.8	18.2	19.6	21	22.4	23.8	25.2	26.6	28	30.8	33.6	36.4	39.2	42	44.8	47.6	50.4	53.2	56	58.8	61.6	64.4	67.2	70
Extension		15.7	17.7	19.7	21.7	23.7	25.7	27.7	29.7	31.7	33.7	35.7	37.7	41.7	45.7	49.7	53.7	57.7	61.7	65.7	69.7	73.7	77.7	81.7	85.7	89.7	93.7	97.7
X																												
Metric mm		450	500	550	600	650	700	750	800	850	900	950	1000	1100	1200	1300	1400	1500	1600	1700	1800	1900	2000	2100	2200	2300	2400	2500
Length		315	350	385	420	455	490	525	560	595	630	665	700	770	840	910	980	1050	1120	1190	1260	1330	1400	1470	1540	1610	1680	1750
Extension		392	442	492	542	592	642	692	742	792	842	892	942	1042	1142	1242	1342	1442	1542	1642	1742	1842	1942	2042	2142	2242	2342	2442
X																												

Universal Corner Bracket



To order please specify item number

Item Number	Description
92020	Universal Corner Bracket, aluminum, sold by piece



Universal Corner Bracket shown with profile A



Universal Corner Bracket shown with profile A, B, and C

Mounting Instructions and Recommendations

FR9001 Aluminum Sliding System (4 T-Slots)

Roller set consists of (see illustration on page 2):
 2 pieces Solid Rollers (red), tolerance compensating
 2 pieces Ballbearing Rollers (white)
 4 pieces Stops
 16 pieces M6x20mm Socket Head Bolts

The roller carriers are marked with:
F for **F**ront
B for **B**ack

FR9001 (4 T-Slots)

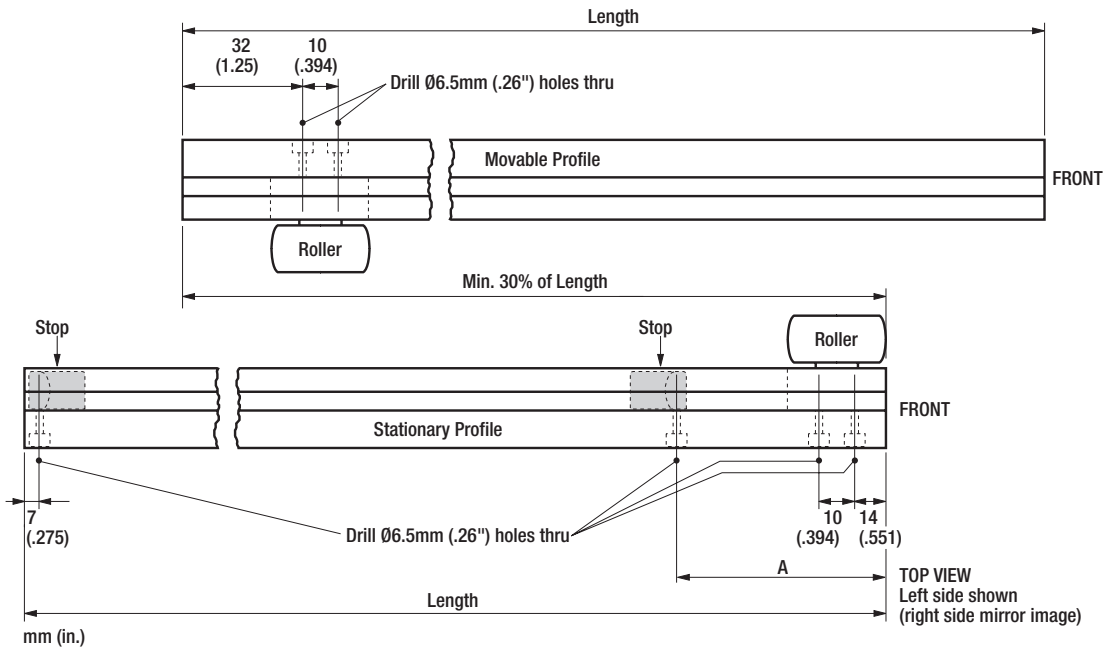
For the **FR9001 (4 T-Slots)** profile this **has to be reversed** because the profile is a **symmetric shape**. This means that on the **stationary profile** the **B** roller and carrier are mounted on the **front** and on the **movable profile** and the **F** roller and carrier are mounted on the **back**.

In order to check if it is **correct** you must notice a **slight incline** of the movable profile from back to front. This compensates for the deflection under load.

Please note that in each set are **white** and **red** rollers.

You must use the same color roller on each side. Never use a white and red roller on the same side.

Follow the included instructions to drill all holes for **roller carriers** and **stops**.



Inches		18	20	22	24	26	28	30	32	34	36	38	40	44	48	52	56	60	64	68	72	76	80	84	88	92	96	100
Length		12.6	14	15.4	16.8	18.2	19.6	21	22.4	23.8	25.2	26.6	28	30.8	33.6	36.4	39.2	42	44.8	47.6	50.4	53.2	56	58.8	61.6	64.4	67.2	70
A		2.7	3.3	3.9	4.5	5.1	5.7	6.3	6.9	7.5	8.1	8.7	9.3	10.5	11.7	12.9	14.1	15.3	16.5	17.7	18.9	20.1	21.3	22.5	23.7	24.9	26.1	27.3
Metric mm		450	500	550	600	650	700	750	800	850	900	950	1000	1100	1200	1300	1400	1500	1600	1700	1800	1900	2000	2100	2200	2300	2400	2500
Length		315	350	385	420	455	490	525	560	595	630	665	700	770	840	910	980	1050	1120	1190	1260	1330	1400	1470	1540	1610	1680	1750
A		66	81	96	111	126	141	156	171	186	201	216	231	261	291	321	351	381	411	441	471	501	531	561	591	621	651	681